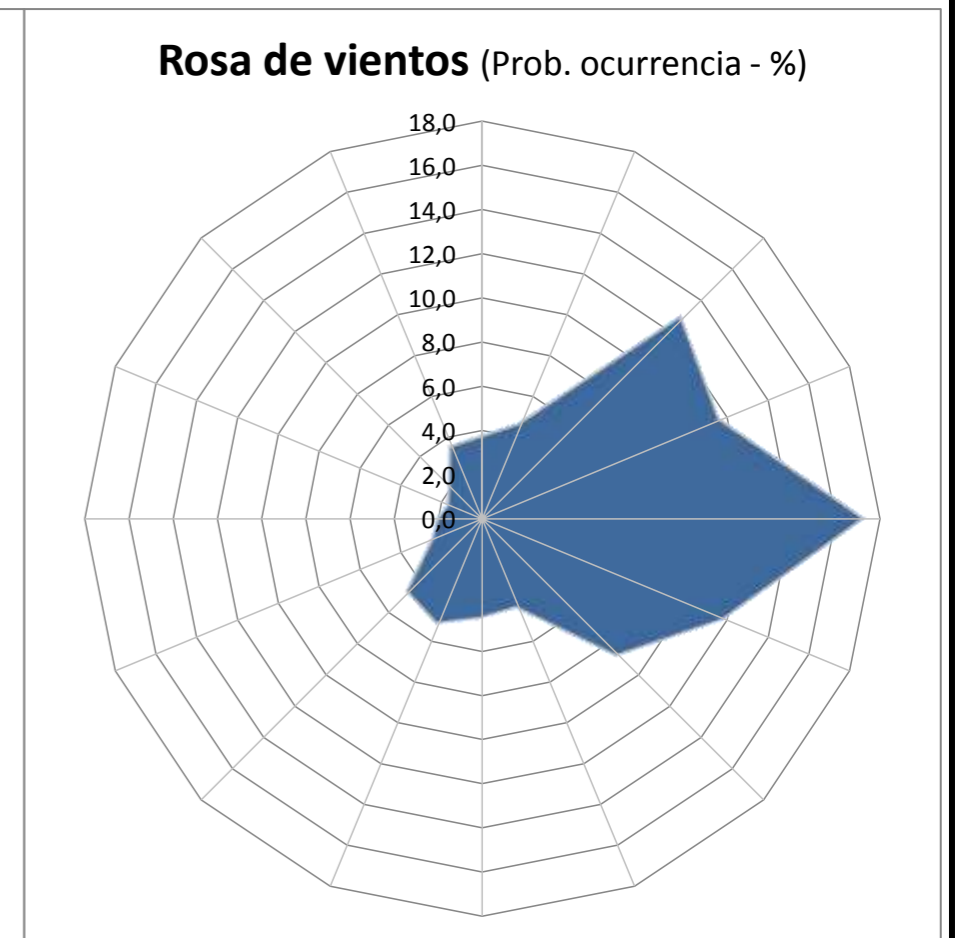
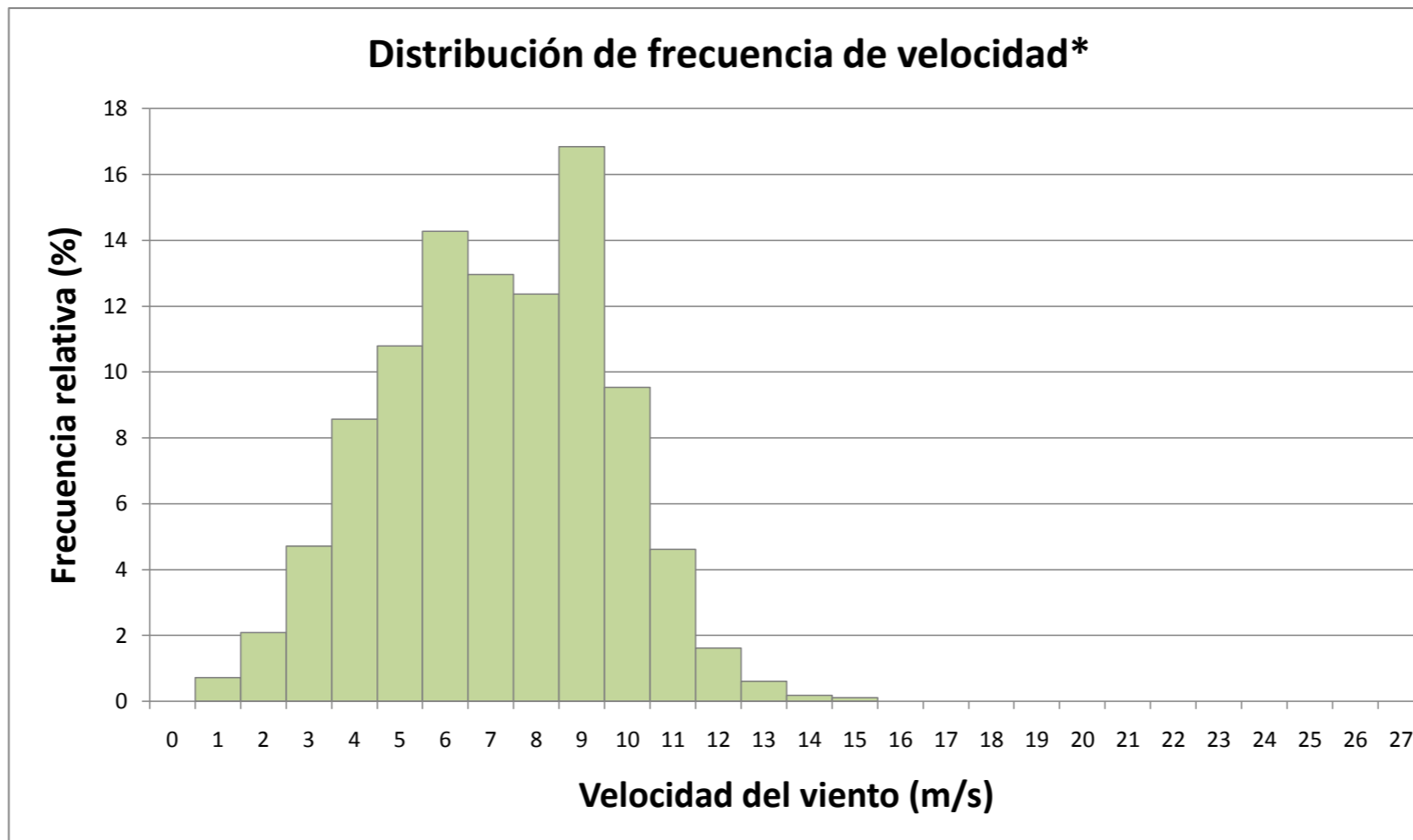




Velocidades medias		
Altura (m)	Orientación	v (m/s)
75,0	Sur	<b>7,1</b>
75,0	Este	<b>7,0</b>
55,0	Sur	<b>6,4</b>
20,0	Sur	<b>4,7</b>



\* Datos obtenidos de anemómetro a 75 m - Orientación Sur

COMENTARIOS